

PART OF SEC. 36, T.8N., R.1W.
PART OF THE N.E. 1/4, OF SEC. 1, T.7N., R.1W., S.L.B. & M.

DURFEE CREEK ESTATES NO.1

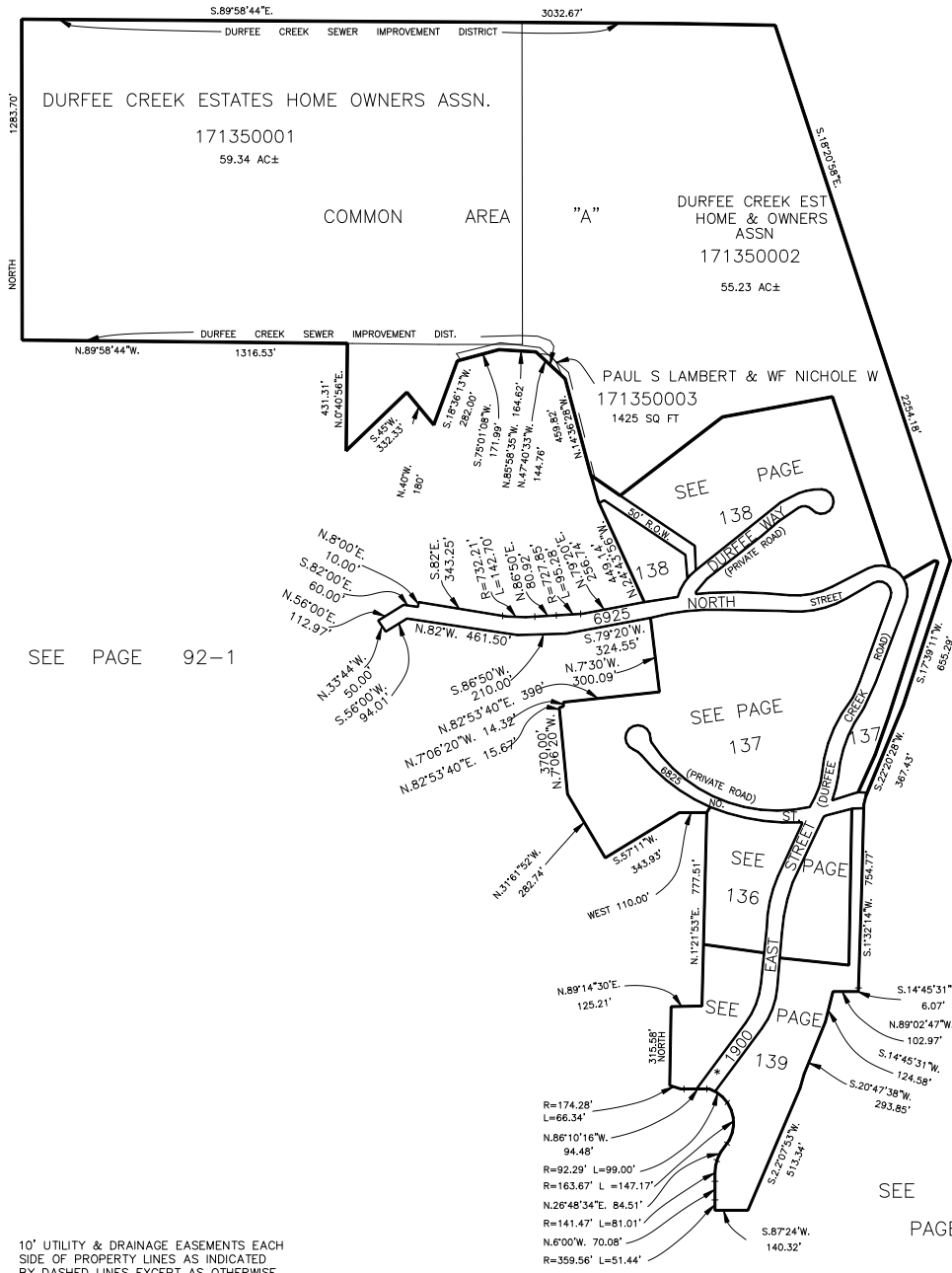
TAXING UNIT: 411

COMMON AREA 'A'

IN WEBER COUNTY

SCALE 1" = 400'

SEE PAGE 92-1



SEE PAGE 92

SEE PAGE 92-1

* SEE ORDINANCE 13-FEB-'96
BK 1791 PAGE 1572
E #1387845

SEE BOOK 16
PAGE 1

FOR COMPLETE ENG DATA SEE
ORIGINAL DEDICATION PLAT IN
BOOK 23, PAGE 28, 29, 30 OF RECORDS.

10' UTILITY & DRAINAGE EASEMENTS EACH
SIDE OF PROPERTY LINES AS INDICATED
BY DASHED LINES EXCEPT AS OTHERWISE
SHOWN.